


SIL-dTect 2600

**NFPA
72
COMPLIANT**



NFPA



**TUV
CERTIFIED
SIL 2**



TÜV Rheinland

FIRE & GAS SYSTEM

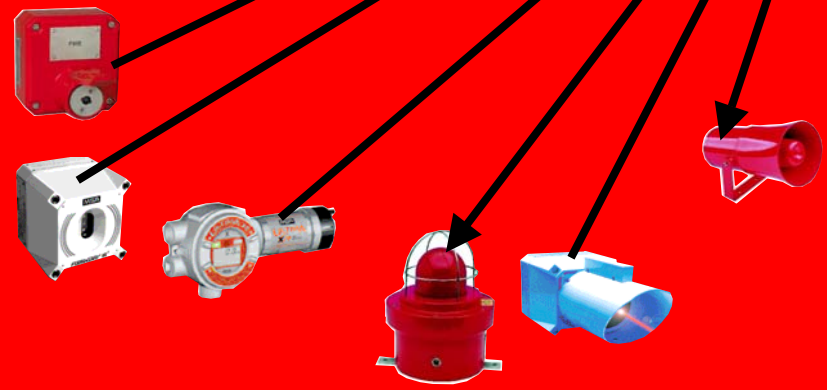
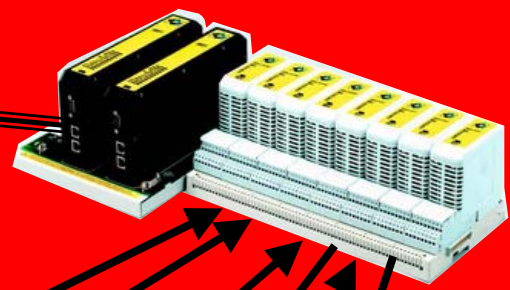
SIL-dTect 2600

SIL-dTect 2600



SIL-dTect 2600

SIL-dTect 2600



FIRE PANEL FEATURES

- **STAND ALONE DESIGN**
- **NEMA 4x DESIGN**
- **CLASS 1, DIVISION II**
- **SUPERVISED I/O WIRING**
- **NFPA 72 COMPLIANT**
- **LOCAL HMI**

SIL-dTect 2600

SIL-dTect 2600



SIL-dTect Vue FEATURES

• PLANT OVERVIEW DISPLAY - 6 COLORS

- ALARM / HIGH LEL 
- LOW LEL 
- DEVICE FAILURE 
- CALIBRATION 
- OUT OF SERVICE 
- NORMAL 



SIL-dTect 2600

SIL-dTect 2600

ZONE-n

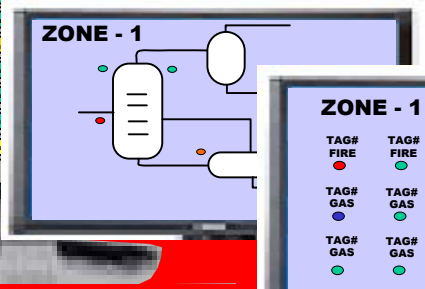
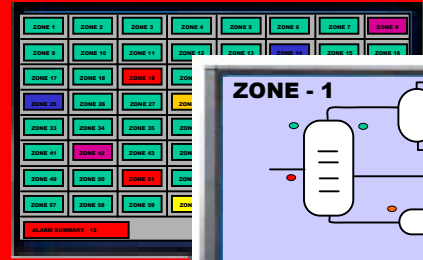


SIL-dTect Vue



ZONE-1

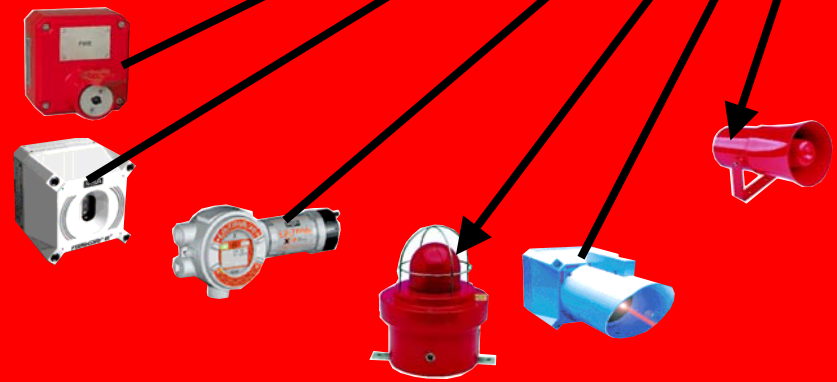
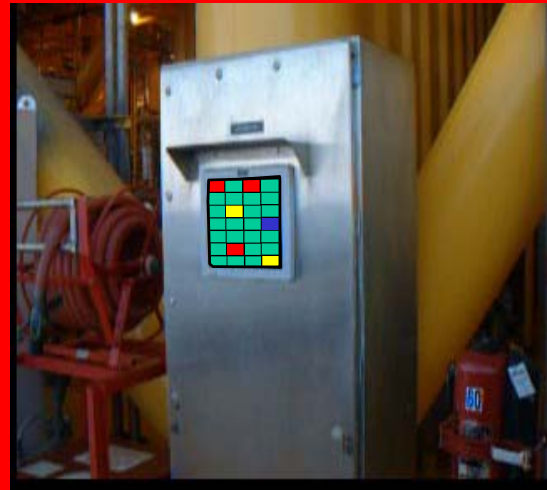
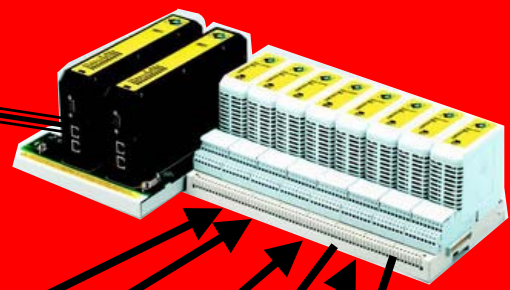
HMI DISPLAYS



ALARM SUMMARY		
GD1022A	FCC HEATER FUEL GAS	LOW % LEL
GD1022A	FCC HEATER FUEL GAS	HIGH LEL
GD1022B	FCC HEATER FUEL GAS	OKAY
GD1022B	FCC HEATER FUEL GAS	LOW % LEL
GD1022B	FCC HEATER FUEL GAS	HIGH LEL
GD1022B	FCC HEATER FUEL GAS	OKAY
FD1022A	FCC HEATER LEFT BNR #1	TRIP
FD1022B	FCC HEATER LEFT BNR #2	TRIP
GD1022A	FCC HEATER FUEL GAS	OKAY
GD1022B	FCC HEATER FUEL GAS	LOW % LEL
GD1022B	FCC HEATER FUEL GAS	HIGH LEL
FD1022B	FCC REBOILER BNR #1	OKAY

SIL-dTect 2600

SIL-dTect 2600

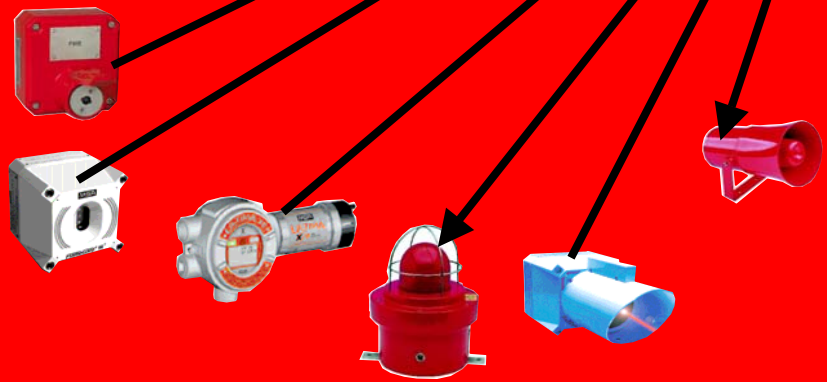
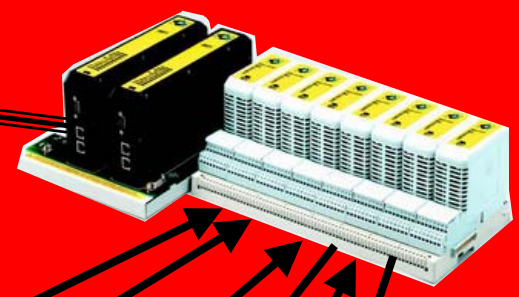


SIL 2 MTL CONTROLLER

- > REDUNDANT CPUs (Optional)
- > CLASS I, DIV 2
- > -40 To 70° C
- > ISA CORROSION RATING - G3
 - > CONFORMAL COATING
- > AUTO RE-ED CPUs
 - > POP-n-SWAP

SIL-dTect 2600

SIL-dTect 2600



SENSOR DIAGNOSTICS

- **CONTROLLER TESTING FOR:**
 - **SENSOR FAILURE**
 - **SENSOR IN CALIBRATION**
 - **SENSOR OUT OF SERVICE**
 - **BROKEN FIELD WIRES**

SPSI

SIL-dTect 2600

FOR MORE DETAILS CONTACT

SAFEPLEX SYSTEMS, INC.

TEL: 713.983.8410

EMAIL: sales@safeplexsystems.com

NFPA 72 COMPLIANT & SIL 2 RATED

SPSI